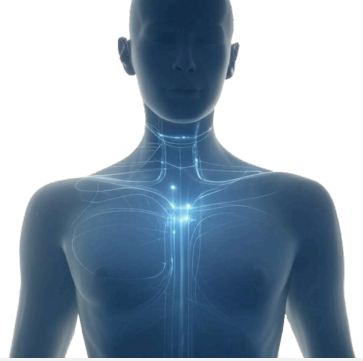


# AIT and Breast Cancer



### Condition / Diagnosis

Patient had a prior history of breast cancer which was treated with a lumpectomy. She had no additional chemo therapy and or radiation intervention with the initial diagnosis. The patient had just been re-diagnosed with a second lump in the same breast.

Upon arrival at our facility a complete review of her laboratory and pathology tests were performed. During this review it was noted that the patient had undergone specialized testing to measure the free circulating tumor cell levels within her body. These levels were exceptionally high. During this initial review process the patient also indicated that she had been a heavy smoker for many years. Reluctantly, she disclosed to our team that she continued to smoke very heavily at this time.

### About the Patient

Age: 59

Sex: F

### Past Care / Treatment / Consultations

Lumpectomy

### Object of Therapy

To treat the patient with the auto infusion technology for the verification of the efficacy of the therapy as applied to the specific condition: recurrent breast cancer

## TREATMENT & RESULTS

### Initial Treatment & Results

The patient was referred to a supervising oncologist to oversee her case while at our facility. The supervising oncologist in conjunction with our team strongly recommended surgical excision of the lump in her breast. We also recommended follow up with the Auto Infusion Technology and a special combination of therapies recommended by the oncologist. The patient was reluctant to follow any of the recommendations. She continued to smoke against all counsel given to her. Other life style considerations including diet, alcohol and drug intake were marginal at best.

We began a series of Auto Infusion sessions over a period of approximately one month. Her tumor markers and her immune competence profile improved drastically as indicated in weekly review and laboratory tests performed by the supervising oncologist. After much deliberation the patient finally decided to have a lumpectomy. The patient left our facility just prior to returning to the east coast for her surgical intervention.

### Subsequent Progress

Of great interest to our team, the patient had a follow up free circulating tumor cell level performed when she returned to the east coast. The results were very dramatic. Her free circulating tumor cell level had dropped to an undetectable range without any other therapeutic intervention other than the Auto Infusion Technology.