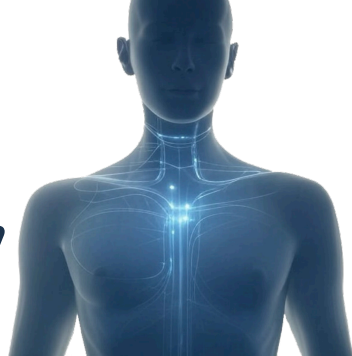


Case Study

AIT and IBS, Chronic Fatigue, Abdominal Pain



Condition / Diagnosis

Patient is a pediatric dentist who had been treated for an extended period of time with various modalities without success in alleviating her chief complaint of abdominal discomfort and pain. Upon referral to our facility the patient related a history of various chronic conditions which had existed for approximately 15 years. The patient being a medical professional and extremely well educated had sought medical intervention at some of the top institution in the country without success. She came to us somewhat reluctant to try yet another therapeutic intervention. Upon presentation at our facility during an extensive history and physical the patient explained the extreme abdominal pain she was experiencing at that time. Due to the progression of her condition, she finally had to abandon her practice as a pediatric dentist.

About the Patient

Age: 55

Sex: F

Past Care / Treatment / Consultations

Various medical interventions at some of the top institution in the US without success

Object of Therapy

To treat the patient with the auto infusion technology for the verification of the efficacy of the therapy as applied to the specific condition: Irritable bowel symptoms, peripheral neuropathy, chronic fatigue, vertical visual disturbances, abdominal and bowel pain discomfort

TREATMENT & RESULTS

Initial Treatment & Results

The patient received seven treatments and immediately began to show signs of improvement in her overall condition. The patient discontinued therapy much sooner than our research team would have preferred.

Subsequent Progress

Following treatments, the patient reports that her bowel function is 100% normal and energy levels have increased to the point that she has gotten back to living a more normal life.

The patient has faithfully remained in contact with our research facilities. She is looking forward to receiving follow up therapy if needed. She remains extremely supportive of our technology.