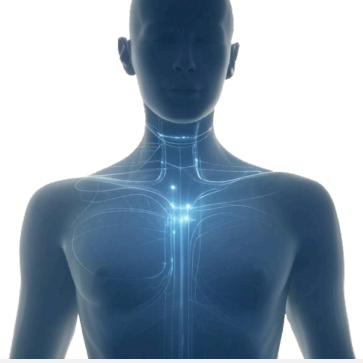


# AIT and Lyme Disease, Chronic Fatigue



### Condition / Diagnosis

Patient was diagnosed with Lyme disease and chronic fatigue syndrome. Patient had contracted a tick bite while working in a remote mountain area. Following the tick bite she began to exhibit numerous symptoms associated with Lyme disease and chronic fatigue. She had been to numerous medical practitioners with advanced training in Lyme disease and chronic fatigue. She had been treated with a wide range of therapies and technologies without success.

### About the Patient

Age: 49

Sex: F

### Past Care / Treatment / Consultations

Numerous medical practitioners with advanced training in Lyme disease and chronic fatigue. She had been treated with a wide range of therapies and technologies without success.

### Object of Therapy

To treat the patient with the auto infusion technology for the verification of the efficacy of the therapy as applied to the specific condition: Lyme disease, chronic fatigue

## TREATMENT & RESULTS

### Initial Treatment & Results

At the time she arrived at our research facility these symptoms had gone on for several years. She was physically debilitated and her mental function was somewhat compromised. She had significantly reduced her work load with her management responsibilities. She was severely limited in her physical capacity in every way. Upon a complete review of her medical records and laboratory reports we determined that her condition was apparently due to a number of different pathogens she had in her body. The traditional antibiotic regimen generally used in traditional medicine had not had any clinical benefit. She exhibited extreme weakness and inability in performing almost any physical activity. She also indicated that she continually was in a state of mental fatigue. Emotionally and psychologically, she was likewise severely compromised.

Our research team assessed all of her previous medical records and updated all necessary laboratory reports which were pertinent to her case. We started her on a regimen of Auto Infusion Therapy to which she responded positively almost immediately. After some initial difficulty she was able to tolerate one hour of therapy without any difficulty. Her life style including diet and other significant parameters was very clean in all areas. She was on a predominantly vegetarian diet and indicated no use of tobacco, alcohol or any type of drugs. Outward appearance indicated a somewhat malnourished female of small frame and stature.

# TREATMENT & RESULTS

## Subsequent Progress

We continued to treat her off and on over a period of approximately three months. During this time her physical, mental, emotional, and psychological well-being improved in all areas. She was faithful in adhering to our protocols and diet and life style recommendations. As the therapy regimen progressed she was able to regain almost all of her former physical, mental, emotional and psychological capacity. She was able to return to her normal work environment and carry on with her management responsibilities. The last follow up we had with her indicated she continued to be significantly improved in all areas and functioning at a very high level of capacity.

This case is extremely remarkable in that the patient had been almost everywhere and tried everything without success in her effort to solve the problems associated with Lyme and chronic fatigue. The Auto Infusion Technology appears to have eliminated any and all pathogens from her body. Her immune function seems to be functioning at a normal level again. She continues to stay in contact with our research team and give us regular updates as to her condition. It has now been approximately eighteen months since her last treatment. She continues to maintain an optimum degree of health without any further intervention.